

# Conducting Patterns

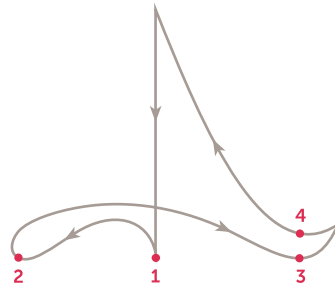
Beats per Measure

Beat Pattern

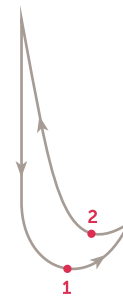
THREE



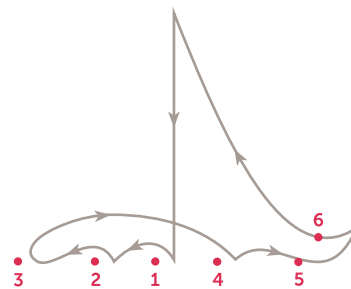
FOUR



TWO



SIX



SHENANDOAH CHRISTIAN  
**music camp**

# *Song Leading* Meter Patterns

Refer to the table below to know what pattern to conduct for each meter signature.

Beats per Measure	Beat Pattern <i>(Draw the correct pattern in the boxes below)</i>	Simple	Compound
TWO		<b>2</b> <b>4</b>	<b>6</b> <b>8</b>
		<b>2</b> <b>2</b>	<b>6</b> <b>4</b>
THREE		<b>3</b> <b>4</b>	<b>9</b> <b>8</b>
		<b>3</b> <b>2</b>	<b>9</b> <b>4</b>
FOUR		<b>4</b> <b>4</b>	<b>12</b> <b>8</b>
		<b>4</b> <b>2</b>	<b>12</b> <b>4</b>
SIX		<b>6</b> <b>8</b>	The 6 pattern is used only when the tempo is unusually slow, whereupon it loses its compound feel.
		<b>6</b> <b>4</b>	